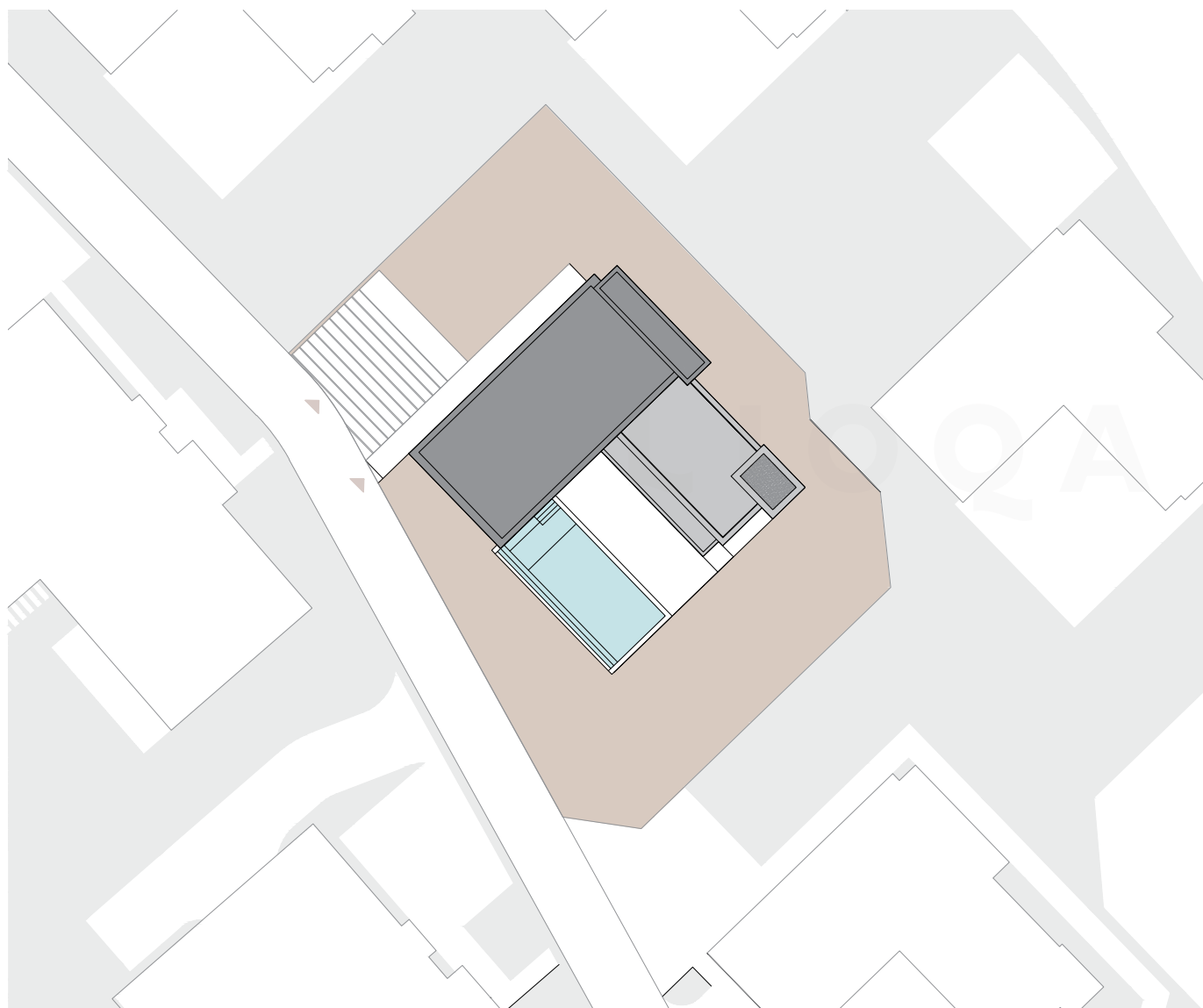


Villa A6+



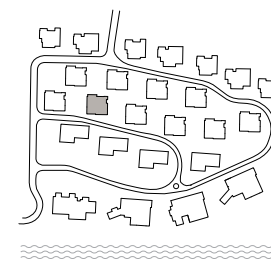
SUMMARY

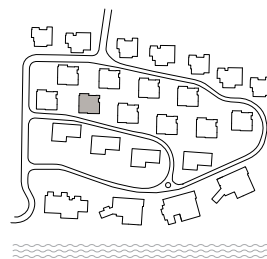
Bedrooms	4
Covered parking	2
Garage	2

TOTAL INDOOR: 278,8 m²

TOTAL OUTDOOR: 236,8 m²

PLOT SIZE: 865,6 m²





Villa A6+

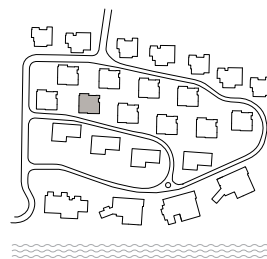
Underground floor



INDOOR AREA

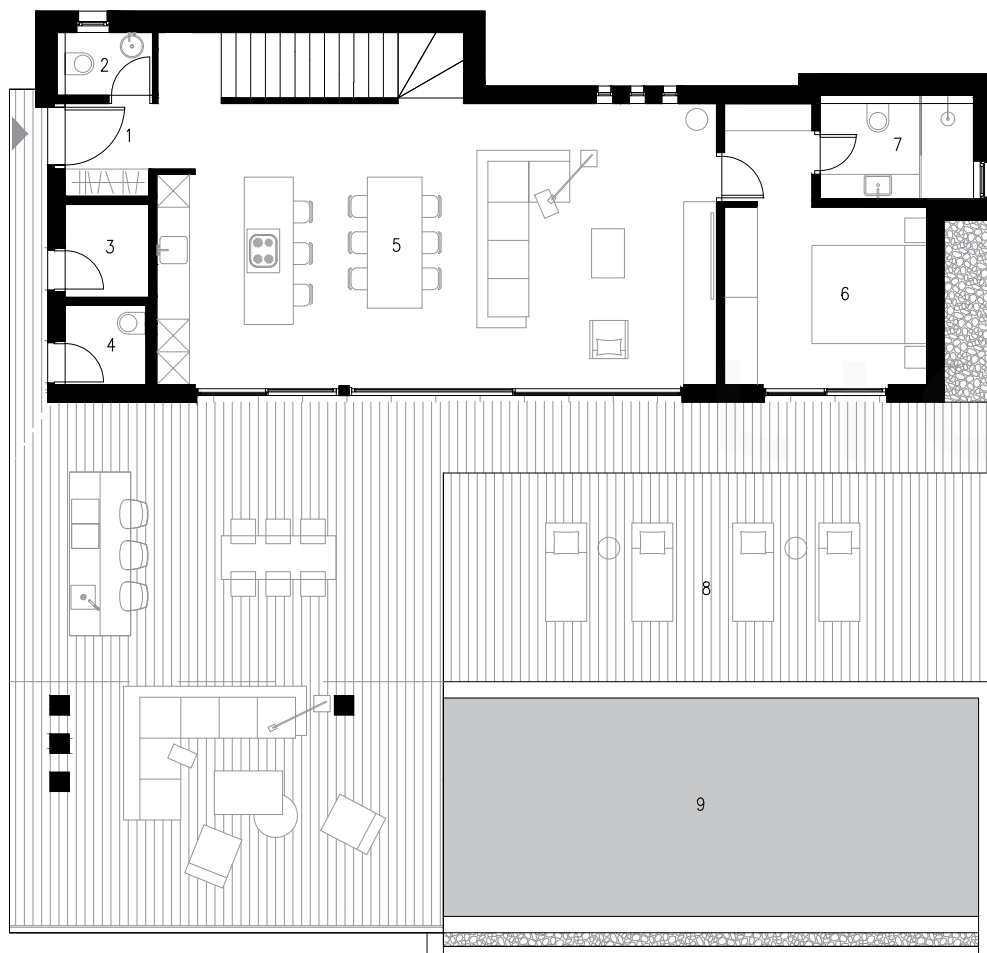
1. Staircase	5,8 m ²
2. Corridor	6,0 m ²
3. Playroom/Fitness	35,8 m ²
4. Anteroom	2,8 m ²
5. WC	2,3 m ²
6. Laundry	2,0 m ²
7. Storage	2,2 m ²
8. Garage	51,0 m ²
9. Pool technical room	4,1 m ²
TOTAL INDOOR:	112,0 m²





Villa A6+

Ground floor



INDOOR AREA

1. Entrance hall	3,6 m ²
2. WC 1	2,0 m ²
3. Technical room	2,6 m ²
4. WC 2	2,2 m ²
5. Kitchen + living room	54,0 m ²
6. Bedroom 1	15,0 m ²
7. Bathroom 1	5,5 m ²

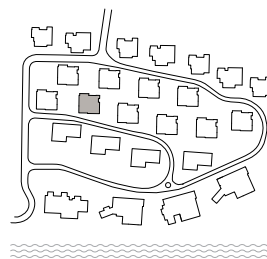
TOTAL INDOOR: 84,9 m²

OUTDOOR AREA

8. Terrace	137,6 m ²
9. Pool	39,2 m ²

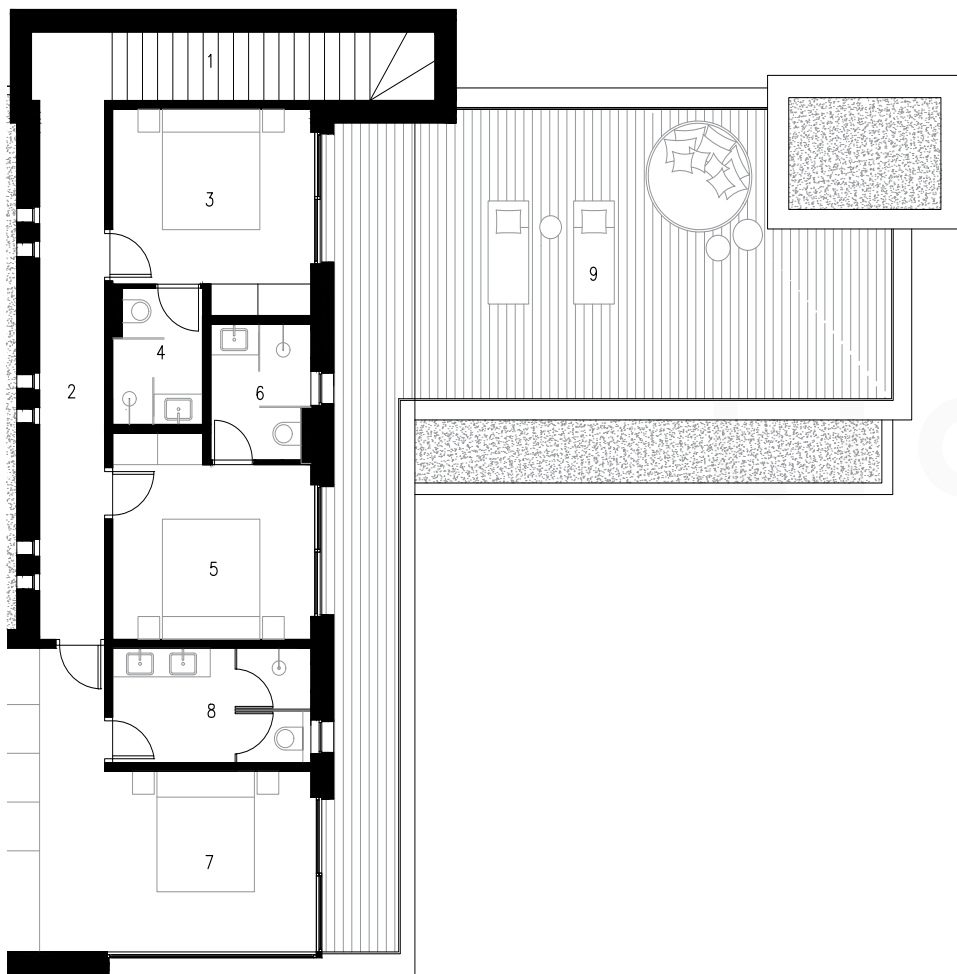
TOTAL OUTDOOR: 176,8 m²





Villa A6+

First floor



INDOOR AREA

1. Stairs	7,3 m ²
2. Corridor	13,1 m ²
3. Bedroom 2	12,7 m ²
4. Bathroom 2	4,0 m ²
5. Bedroom 3	12,7 m ²
6. Bathroom 3	4,1 m ²
7. Bedroom 4	21,7 m ²
8. Bathroom 4	6,6 m ²

TOTAL INDOOR: 82,2 m²

OUTDOOR AREA

9. Terrace	60,0 m ²
------------	---------------------

TOTAL OUTDOOR: 60,0 m²

